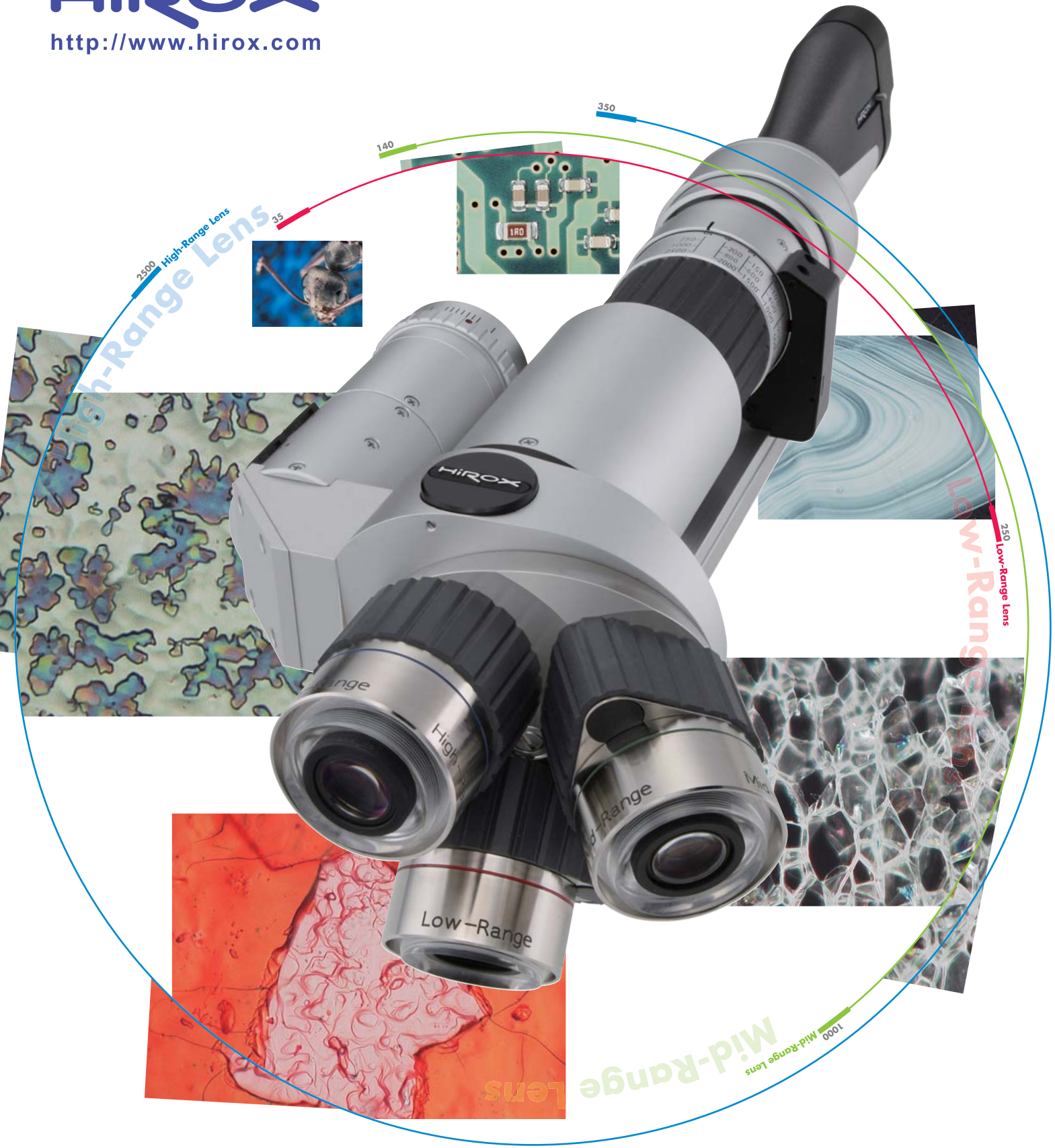


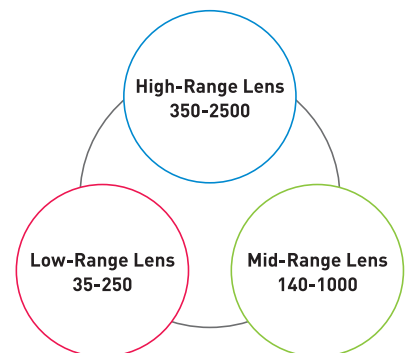
# HiROX

<http://www.hirox.com>



A Revolution in Design for Optical Digital Microscopes  
35x-2500x Zoom Lens

## MXG-2500REZ Dual Illumination Revolver Zoom Lens



# Incredibly Wide Zoom Range with a Triple Objective Turret

## 35x to 2500x magnification provides a field of view from 8 mm to 0.12 mm

A new lens design provides macro to micro views. Turning the turret allows the operator to access each objective lens and an optical zoom range of over 70 times the minimum magnification. Lens parfocality allows for sustained focus across the entire magnification spectrum from 35x-2500x. The ACS (auto calibration select) is integrated and recognizes the objective lens positioning as well as the zoom level. As always, all calibration information will be displayed and stored, eliminating any potential human error.

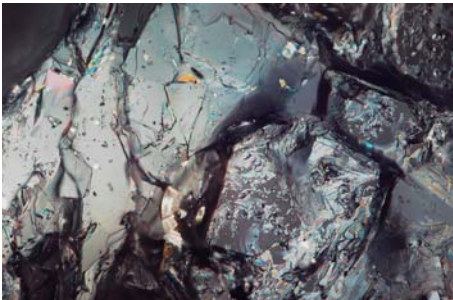
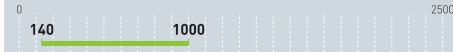


### Low-Range Lens



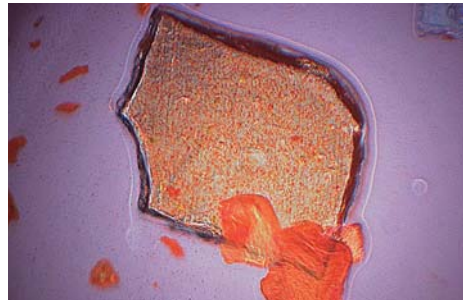
Dandelion (50x)

### Mid-Range Lens



Raw stone of superconductive material (800x)

### High-Range Lens

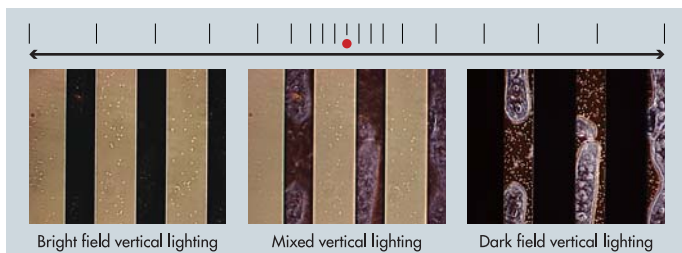


Manicure (1500x)

## Dual Illumination

### Selectable New Lighting System

The dual illumination mechanism provides both co-axial and ring lighting. The operator is free to choose either setting or a mix of both in order to cover a multitude of applications. The lighting system is integrated into the lens and no additional cables are required.



## Adapters

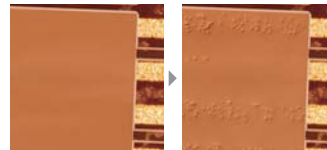
### Control Image Quality Optically

Eliminate the need for post image processing software. 7 different adapters provide a variety of optical techniques to re-create images that cannot be expressed only with co-axial and ring lighting.

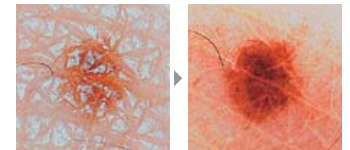


- Directional adapter
- Aperture adapter
- Polarizing adapter
- Optical rotary adapter
- Fixed aperture adapter
- Edge enhancement adapter
- Contrast filter adapter

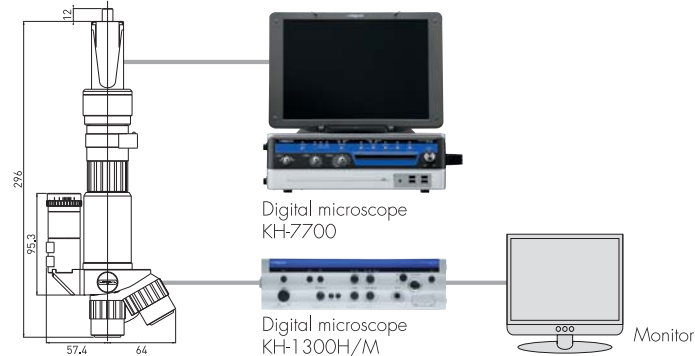
Directional lighting adapter



Polarizing filter lighting



## System



## Spec

Name	Dual Illumination Revolver Zoom Lens		
Model	MXG-2500REZ		
Lighting method	Co-Axial, Ring and Mixed		
Range	Low-Range	Mid-Range	High-Range
Magnification	35x to 250x	140x to 1000x	350x to 2500x
Field of view (H)	8.71~1.22mm	2.18~0.31mm	0.87~0.12mm
WD	10.0mm		
Weight	1290g		
ACS	○		
Included accessories	Directional adapter		
Option	Fixed aperture adapter, Aperture adapter, Edge enhancement adapter, Polarizing adapter, Contrast filter adapter, Optical rotary adapter		

**Hirox Co., Ltd.** <http://www.hirox.com>  
2-15-17 Koenji Minami, Suginami-ku, Tokyo 166-0003, Japan  
Tel: (+81) 3-3311-9911 Fax: (+81) 3-3311-7722 E-mail: [tokyo2@hirox.com](mailto:tokyo2@hirox.com)

**Hirox-USA Inc.** <http://www.hirox-usa.com>  
100 Commerce Way, Hackensack, NJ 07601  
Tel: (201) 342-2600 Fax: (201) 342-7322  
Toll-Free: (866) HIROX-US E-mail: [info@hirox-usa.com](mailto:info@hirox-usa.com)

**Hirox China Co., Ltd.** <http://www.hirox.com.cn>  
Room 809, 8th Floor, Fortune International Plaza,  
No. 43 Guo-Quan Road, Shanghai 200433, China.  
Tel: +86-21-6564-7772 Fax: +86-21-3362-5017 Email: [info@hirox.com.cn](mailto:info@hirox.com.cn)

**Hirox Korea Co., Ltd.** <http://www.hiroxkorea.com>  
#719 Metrokhan Bldg, 1115 Bisan-dong, Dongan-ku, Anyang-city, Gyeonggi-do, 431-058, Korea  
Tel: +82-31-385-1130 Fax: +82-31-385-9730 E-mail: [bgkim@hiroxkorea.com](mailto:bgkim@hiroxkorea.com)

**Hirox Asia Ltd.** <http://www.hirox-asia.com>  
Suite 1213, 12/F, Ocean Centre, 5 Canton Road, Tsimshatsui, Kowloon, Hong Kong  
Tel: +852 8198-9679 Fax: +852 3015-7657 E-mail: [info@hirox-asia.com](mailto:info@hirox-asia.com)

**Hirox Europe** <http://www.hirox-europe.com>  
Jyfel, 9 rue des Gantries, F-69130 Ecully, France  
Tel: +33 426 25 03 40 Fax: +33 426 23 68 13 E-mail: [info@hirox-europe.com](mailto:info@hirox-europe.com)

## Contact

The products in this catalog may be changed at any time, without notice.

PHP-6000-5000-A